

# Heavy-Duty Pull Tight Seals (HPT)



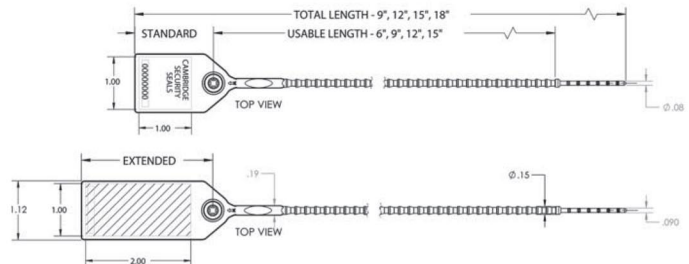
## Applications

- Trailer Doors
- Bulk Tankers
- Railroad Cars

- Storage Cabinets
- Storage Totes
- Storage Boxes

- Cash-in-Transit
- Containers

The CSS Heavy Duty Pull Tight is an adjustable tamper-evident seal available in four lengths: 9", 12", 15", and 18". This seals' proprietary technology and engineering allows it to have a unique and thinner diameter that is actually 40% stronger (as measured by tensile strength) than similar industry alternatives. The combination of increased strength and a thinner diameter is a critical benefit when securing items that require the seals to fit through small apertures.



### Standard Colors



### Pastel Colors



### Neon Colors



Material	Seal Body - High-Density Polyethylene Locking Chamber - Acetal			
Tensile Strength	50-55 lbs			
Length Size Option	9"	12"	15"	18"
Length Extended Tab	10"	13"	16"	19"
Length (Usable)	6"	9"	12"	15"
Standard Colors	Blue, Red, Green, Orange, Yellow, Gray, Black & White,			
Pastel Colors	Pastel Pink, Pastel Green, Pastel Orange, Pastel Blue, Pastel Purple,			
Neon Colors	Neon Pink, Neon Green, Neon Yellow, Neon Orange,			
Print Options	Hot Stamped, Laser Printing			
Print Colors	Black, White, Custom (foil)			
Customization	Customer name, logo printing, barcode, and visible number (laser)			
Packing	10 seals per strip, 1000 seals per box			
Box Dimensions Gross Weight/Ship Weight	9"	12"	15"	18"
	12" 11.25" x 14.5" 7.85 lbs/8 lbs	14.25" x 12" x 14.5" 9.25 lbs/10 lbs	17" x 12" x 14.25" 10.75 lbs/11 lbs	20.25" x 12" x 14.25" 11.95 lbs/12 lbs
Boxes Per Pallet	54 boxes	54 boxes	48 boxes	36 boxes

